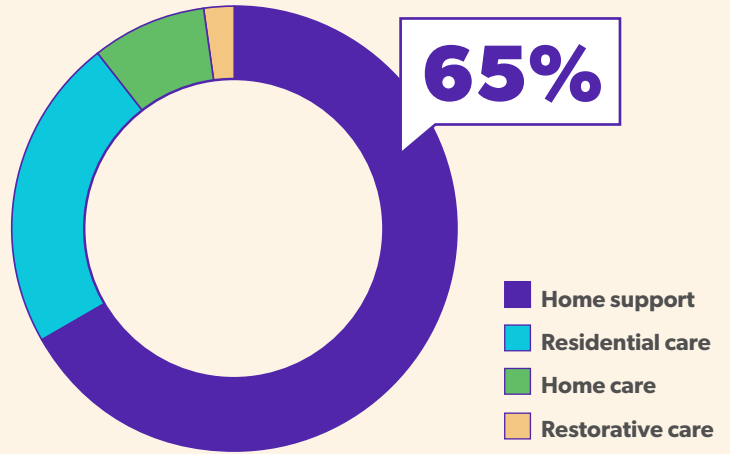




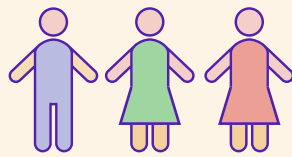
People using aged care

2018-19

The majority of people using aged care were using home support



2 in 3 people using aged care were women



Around 70% of people using aged care were living in a *Major city*

The number of people living in residential care and using home care has

increased by 42% over the last decade

2009	203,000
2014	234,000
2019	289,000



Around 1 in 3 people living in residential aged care were born overseas

Only 1% of people living in residential aged care identified as an Aboriginal or Torres Strait Islander Australian

