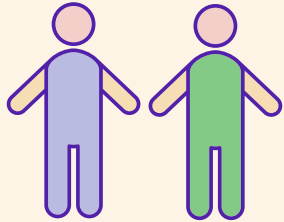


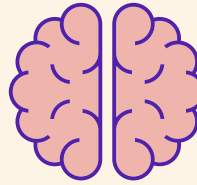


# People's care needs in aged care

2015-16



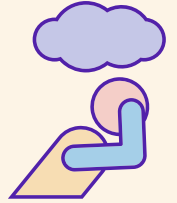
**Around  
1 in 2 people**  
in permanent  
residential aged care  
have...



Dementia



A mental health  
or behavioural condition



Depression

## People with dementia

have higher care needs



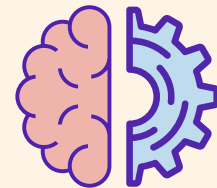
**People born in...  
Non-English  
speaking countries  
have higher care needs**



The amount of people  
with a high care need  
has **increased**  
over the years

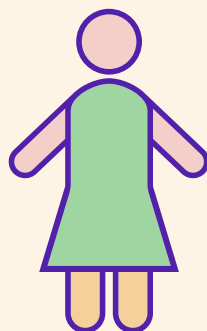
## High care needs are greatest for Cognition and behaviour

**63%**  
Cognition and  
behaviour



## Care needs are highest for women

regardless  
of the age group



**61%**  
Complex  
health care

**56%**  
Activities of  
daily living

