

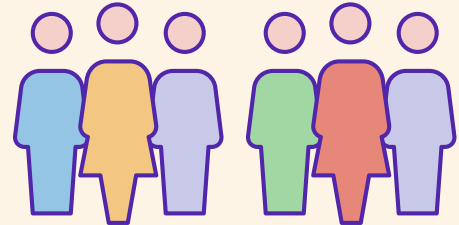


Admissions into aged care

2015-16

Over 213,000

people accessed aged care in 2015-16



2 in 3 people

using aged care
moved into
residential
aged care



21% of people
entering aged care
use home care

The average age

of people moving into
residential aged care is

84 years old



On average, people wait



after being approved, before
they enter residential aged care

+11%

The number of people
going into residential
aged care has increased
over the last 5 years

