

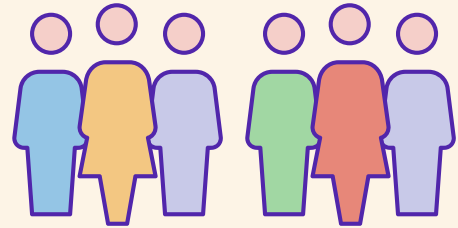


People leaving aged care

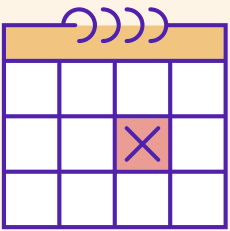
2015-16

206,700 people

left aged care in 2015-16



On average, people stay

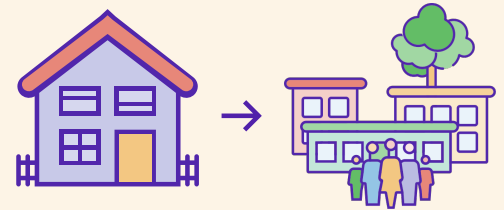


3 years

in residential
aged care

1 in 3 people in home care

eventually
move into
residential
aged care



Women stay in

residential aged care

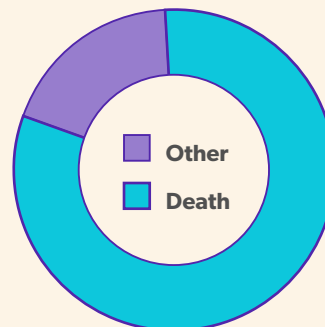


around a year longer than men

People receiving high-level Home care

use it almost 3 times longer

than those using low-level Home care



81%

of people leave
residential care
due to death