

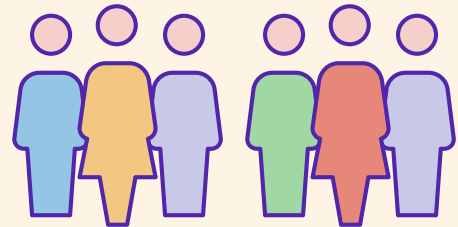


People leaving aged care

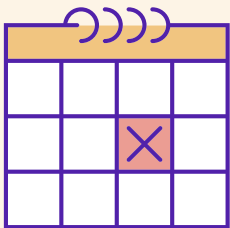
2016-17

206,000 people

left residential aged care, home care or transition care in 2016-17



On average, people stay

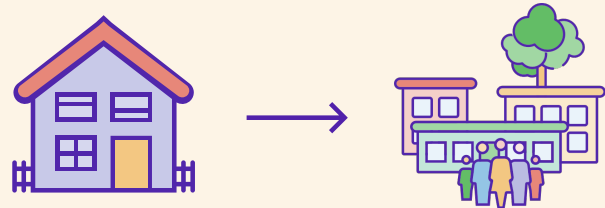


2.5 years

in permanent residential care

4 in 10 people

who left home care moved into residential care



Women stay in

permanent residential care

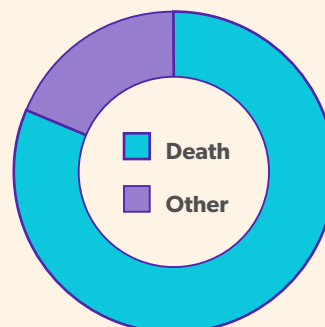


almost a year longer than men

People use home care for an average of 1.6 years,

almost a year less

than permanent residential care



82%

of people leave permanent residential care due to death