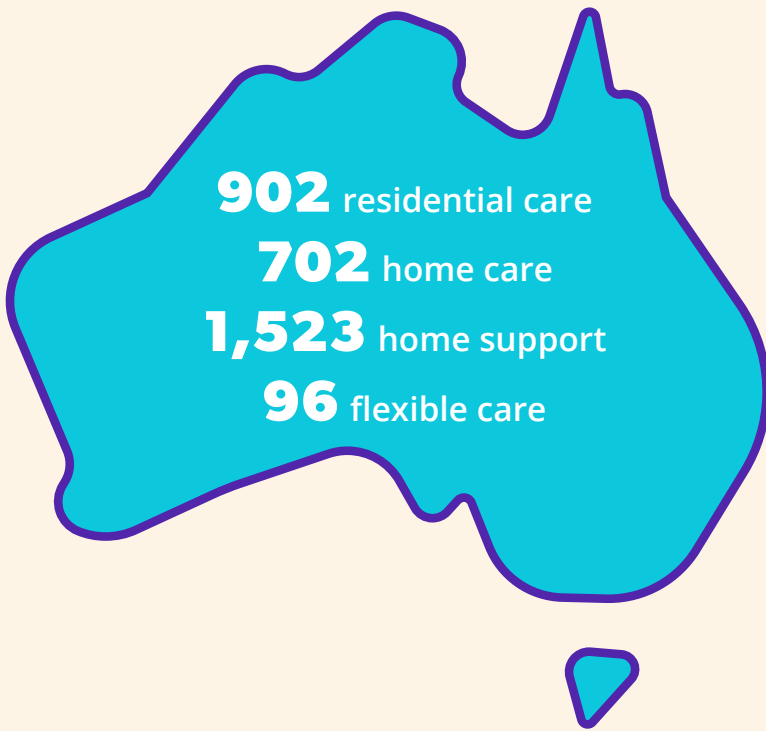




# Services and places in aged care

2016-17

## Organisations delivering aged care:



**Almost 2 in 3** residential aged care services are in *Major cities*



**The Government runs more residential services in remote areas**



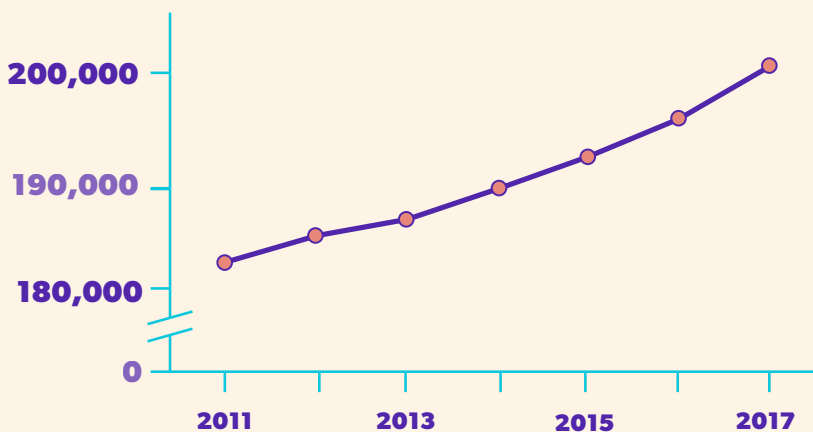
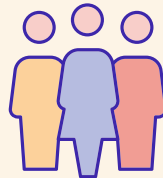
*Major cities 2%*

*Inner/outer regional 20%*

*Remote & Very remote*

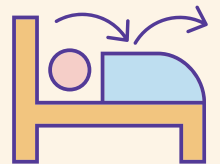
**26%**

As Australia's population ages... **the number of residential care places has increased**



**400**

new places in short-term restorative care were made available in 2016-17



**Nearly 3 in 5 residential care services**

are managed by not-for-profit organisations

